

# MICHELIN XMH S

E2S radial tyre, for long distance transport  
at high speeds (logging, ...)

More productivity (#)

More safety (#)

More comfort (#)



# compared to XMP

# MICHELIN XMH S

E2S radial tyre,  
for long distance transport  
at high speeds (logging, ...)

SIZES	TREAD DEPTH	
	mm	32 <sup>nd</sup> inch
385/95 R 24 E2 S TT 170E	24	30
385/95 R 25 E2 S TL 170E	24	30

## ➤ PRODUCTIVITY GAINS (#)

- Optimized crown structure
  - rubber compound and design allowing long distance operations with a high wear resistance

## ➤ INCREASED TREAD LIFE OF 20 % (#)

- Massive tread
  - "Land to sea" ratio increased
  - improved wear form (tread blocks) design

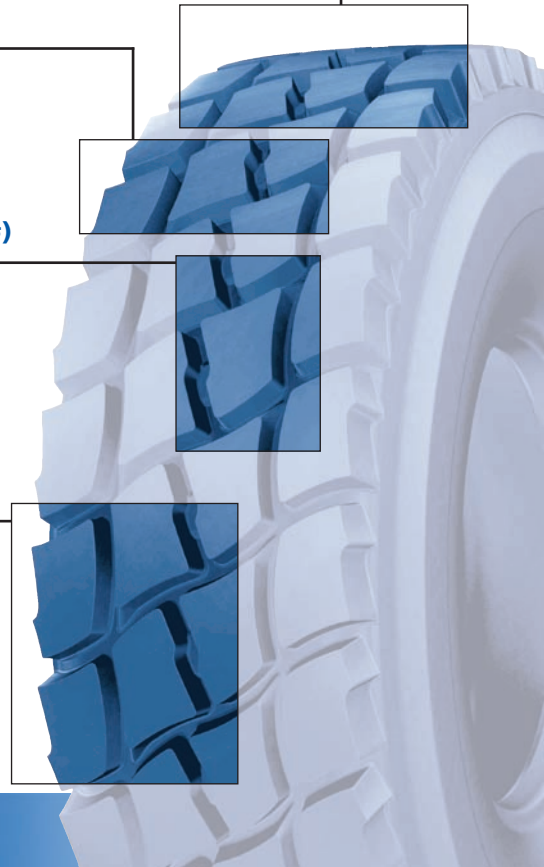
## ➤ IMPROVED SAFETY (#)

- Heavily blocked tread pattern with longitudinal and lateral grooves
  - better grip
  - precise handling

## ➤ IMPROVED COMFORT AND TRACTION (#)

- Tread pattern with offset blocks
  - progressive contact ground
  - improved handling
  - reduced vibrations

(#) compared to XMP 170 E



855 200 507 RCS Clermont-Ferrand  
Edition 7413 Gb (2010-10) - Ref. 0508919  
fusium F21338 - Tel. 04 73 73 25 25

REPAIRABLE TYRE

### BENEFITS OF THE MICHELIN® RADIAL TECHNIQUE

- longer tyre life
- better traction on all types of surface
- lower fuel consumption
- improved comfort
- increased resistance to punctures / flats
- increased heat resistance

