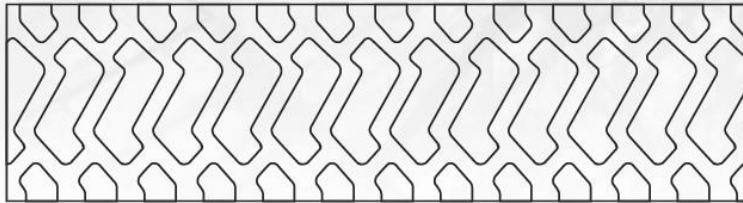




MS301

E3/G3/L3



Engineered for articulated dump trucks, graders and loaders, the MS301 provides excellent operator comfort and superb traction.

- Wear and cut resistant tread compound.
- Self-cleaning tread.
- Superior traction.
- Suitable for loaders and articulated dumpers.
- Excellent traction and flotation.
- Low vibration and excellent stability.

SIZE	STAR RATING	TYPE	RIM	O.D.	S.W.	TREAD DEPTH	INFL. P.	L.C.C (LBS/KG)	INFL. P.	L.C.C (LBS/KG)	LOAD & SPEED
				In	In	32nds	psi	5mph	Psi	30 mph	
				mm	mm	mm	Kpa	10kph	KPa	50 kph	
17.5R25	**	TL	14.00/1.5	52.7	17.7	35	94	18700	76	12000	182A2/167B
				1339	449	28	650	8500	525	5450	

E&OE. All measurements are based on Maxam and industry standards. Physical tyre measurements may vary slightly.